



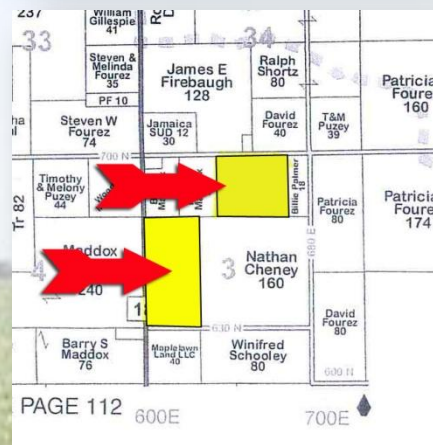
# Jamaica Farm

*131.35 ± acres located in Jamaica Twp., Vermilion County, Illinois.*

- 125.45 tillable acres
- Does not include 5.147 ± acres where farmstead is located.
- Primary soils: Drummer silty clay loam, Flanagan silt loam
- Farm is rented for 2020 crop year.
- Farm is under agreement with Sunrise Coal, LLC until September 2021

**Location:** From south edge of Fairmount, go 5 miles to Salt Fork Elementary & Jr. High School. Property is 1/4 mile south and 1/2 mile east of the school. From Sidell, go 4 miles north to Salt Fork Elementary & Jr. High School. Watch for signs.

**Price - \$10,900.00 per acre**



**Frank Butler, Managing Broker IL, IN**  
**Butler Land Company**  
**515 Poland Rd., Danville, IL 61834**  
**217-260-4742**

**butlerlandco.com**



Area Symbol: IL183, Soil Area Version: 14													
Code	Soil Description	Acres	Percent of field	Il. State Productivity Index Legend	Subsoil rooting a	Corn Bu/A	Soybeans Bu/A	Wheat Bu/A	Oats Bu/A b	Sorghum c Bu/A	Alfalfa d hay, T/A	Grass-legume e hay, T/A	Crop productivity index for optimum management
152A	Drummer silty clay loam, 0 to 2 percent slopes	67.99	51.6%		FAV	195	63	73	100	0	0.00	5.64	144
154A	Flanagan silt loam, 0 to 2 percent slopes	61.09	46.4%		FAV	194	63	77	102	0	0.00	5.90	144
**171B	Catlin silt loam, 2 to 5 percent slopes	2.70	2.0%		FAV	**185	**58	**72	**98	0	**6.70	0.00	**137
<b>Weighted Average</b>						<b>194.3</b>	<b>62.9</b>	<b>74.8</b>	<b>100.9</b>	<b>*</b>	<b>0.14</b>	<b>5.64</b>	<b>143.9</b>