

Butler Land Company

Salt Fork Farm

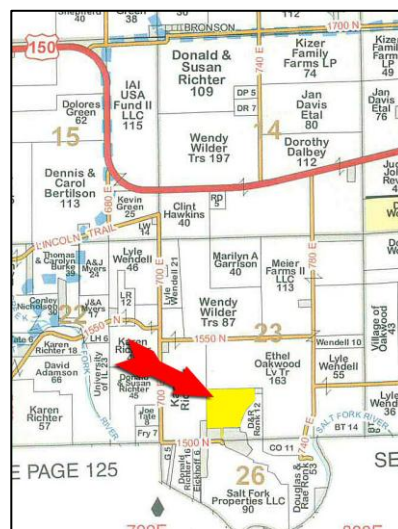
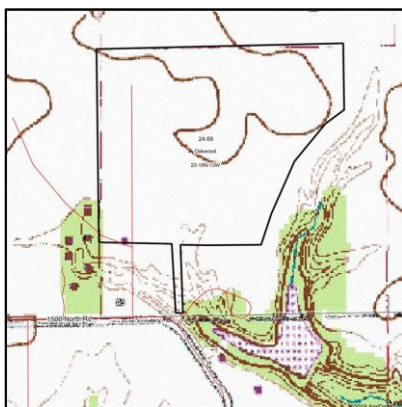
County: Vermilion
State: Illinois
Twp: Oakwood
Property type: Tillable



Directions: From Casey's in Oakwood, go west on US 150 to Road 700 East, go south on 700 East until road turns and becomes 1500 N, go east 3/8 mile. Property on north side of road.

- 25.58 surveyed tillable acres
- **Primary soils:** Sabina, Drummer
- **Productivity Index:** 123.7
- Possession available for 2020 crop year
- Hard-surface road on the south
- Survey and legal description on website

Price - \$225,000.00



Frank Butler
 Illinois Managing Broker • Indiana Principal Broker • Farm Manager
Butler Land Company
 515 Poland Road, Danville, IL 61834
 217-260-4742
www.butlerlandco.com

Area Symbol: IL 183, Soil Area Version: 14													
Code	Soil Description	Acres	Percent of field	Il. State Productivity Index Legend	Subsoil rooting a	Corn Bu/A	Soybeans Bu/A	Wheat Bu/A	Oats Bu/A	Sorghum c Bu/A	Alfalfa d hay, T/A	Grass-legu e hay, T/A	Crop productivity index for optimum management
236A	Sabina silt loam, 0 to 2 percent slopes	21.07	86.9%	Orange	FAV	168	52	65	87	0	0.00	5.14	122
152A	Drummer silty clay loam, 0 to 2 percent slopes	2.10	8.7%	Green	FAV	195	63	73	100	0	0.00	5.64	144
**233B	Birkbeck silt loam, 2 to 5 percent slopes	1.01	4.2%	Orange	FAV	**165	**51	**65	**87	0	**5.09	0.00	**121
**224G	Strawn silt loam, 35 to 75 percent slopes	0.07	0.3%	Cyan	FAV	**67	**23	**27	**29	0	**1.68	0.00	**50
Weighted Average						169.9	52.8	65.6	88	-	0.22	4.95	123.7

