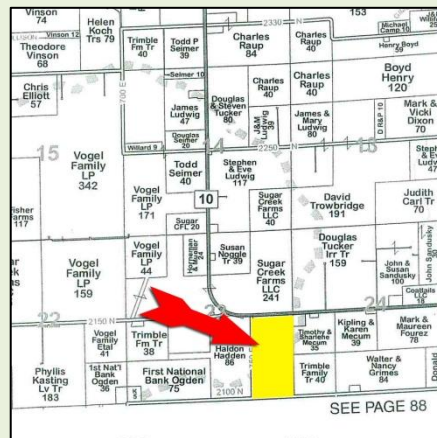


# Butler Land Company

## Hart Farm

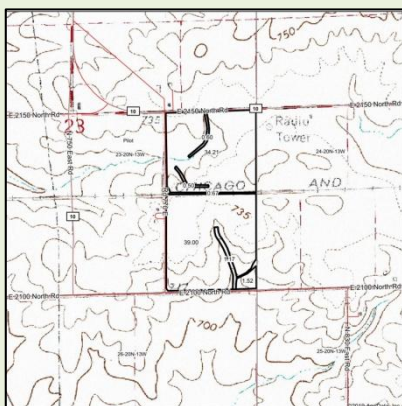
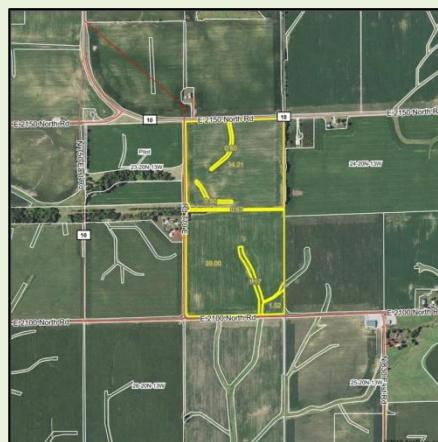
**County:** Vermilion  
**State:** Illinois  
**Twp:** Pilot (E)  
**Property type:** Tillable



**Directions:** From Oakwood, Illinois, go north 3½ miles to Newtown Middle School. Turn west and go one mile. Farm on south side of road. *OR* From Collison, go south 3 miles around curve. Farm on south side of road.

- 80 acres with 74.73 acres tillable
- **Primary soils:** Elliott, Askum
- **Productivity Index:** 120.9
- Possession available for 2020 crop year
- Hard-surface road on the north
- **2018 taxes payable 2019:** \$1,846.30

**Price -** \$6,995 per acre



**Frank Butler**  
 Illinois Managing Broker • Indiana Principal Broker • Farm Manager  
**Butler Land Company**  
 515 Poland Road, Danville, IL 61834  
 217-260-4742  
[www.butlerlandco.com](http://www.butlerlandco.com)

Area Symbol: IL183, Soil Area Version: 14													
Code	Soil Description	Acres	Percent of field	Ill. State Productivity Index Legend	Subsoil rooting a	Corn Bu/A	Soybeans Bu/A	Wheat Bu/A	Oats Bu/A	Sorghum c Bu/A	Alfalfa d hay, T/A	Grass-leg me e hay, T/A	Crop productivity index for optimum management
**146B2	Elliott silty clay loam, 2 to 4 percent slopes, eroded	23.79	30.6%		FAV	**160	**52	**65	**83	0	0.00	**4.77	**119
146A	Elliott silt loam, 0 to 2 percent slopes	20.24	26.1%		FAV	168	55	68	87	0	0.00	5.02	125
232A	Ashkum silty clay loam, 0 to 2 percent slopes	19.73	25.4%		FAV	170	56	65	85	0	0.00	5.14	127
**223B2	Varna silt loam, 2 to 4 percent slopes, eroded	13.91	17.9%		FAV	**150	**48	**61	**75	0	**4.65	0.00	**110
<b>Weighted Average</b>						<b>162.8</b>	<b>53.1</b>	<b>65.1</b>	<b>83.1</b>	<b>0</b>	<b>0.83</b>	<b>4.07</b>	<b>121</b>

