

# Butler Land Company

## Ruth Layden 80

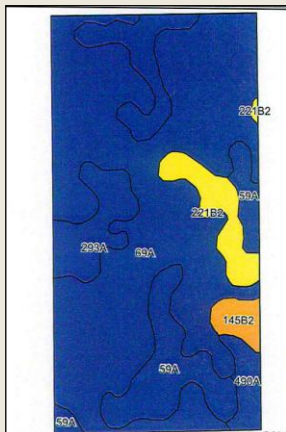
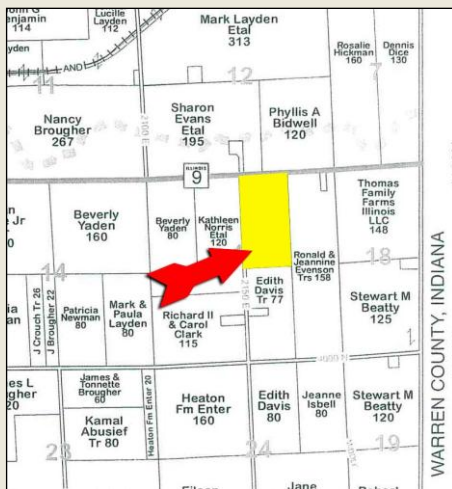
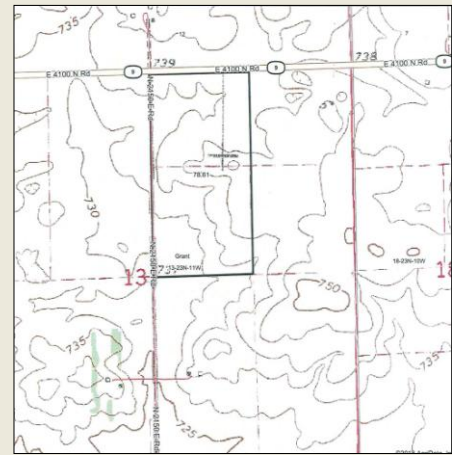
County: Vermilion  
 State: Illinois  
 Twp: Grant  
 Property type: Tillable

Directions: East of Hoopston on Rt. 9 approximately 5 1/2 miles to Co. Rd. 2150 East. Farm is in the southeast corner of Rt.9 and 2150 E.



- 80+/- acres – 76.81 FSA cropland
- Primary soils: Milford silty clay loam, Andres silt loam, Lisbon silt loam
- West 70 acres are system tiled (see map on website)
- Farm is leased for 2018 on a 50/50 crop share.
- 2016 taxes paid in 2017: \$2,326.34

Price - \$8,400 per acre



Code	Soil Description	Acres	Percent of field	Ill. State Productivity Index Legend	Subsoil rooting a	Com Bu/A	Soybeans Bu/A	Wheat Bu/A	Oats Bu/A b	Sorghum c Bu/A	Alfalfa d hay, T/A	Grass-legume e hay, T/A	Crop productivity index for optimum management
69A	Milford silty clay loam, 0 to 2 percent slopes	50.88	64.7%	■	FAV	171	57	68	88	0	0.00	5.52	128
59A	Lisbon silt loam, 0 to 2 percent slopes	9.94	12.6%	■	FAV	188	59	74	104	0	0.00	5.64	136
293A	Andres silt loam, 0 to 2 percent slopes	9.58	12.2%	■	FAV	184	59	71	97	0	0.00	5.39	135
**221B2	Parr silt loam, 2 to 5 percent slopes, eroded	4.22	5.4%	■	FAV	**151	**49	**61	**65	0	**5.12	0.00	**113
490A	Odell silt loam, 0 to 2 percent slopes	2.22	2.8%	■	FAV	176	56	68	90	0	0.00	5.14	129
**145B2	Saybrook silt loam, 2 to 5 percent slopes, eroded	1.77	2.3%	■	FAV	**170	**54	**66	**90	0	**5.96	0.00	**125
Weighted Average						173.8	57	68.7	90	*	0.41	5.09	128

**Frank Butler**  
 Illinois & Indiana Managing Broker  
 Farm Manager  
**Butler Land Company**  
 515 Poland Road, Danville, IL 61834  
 217-260-4742  
 www.butlerlandco.com