

# Butler Land Company

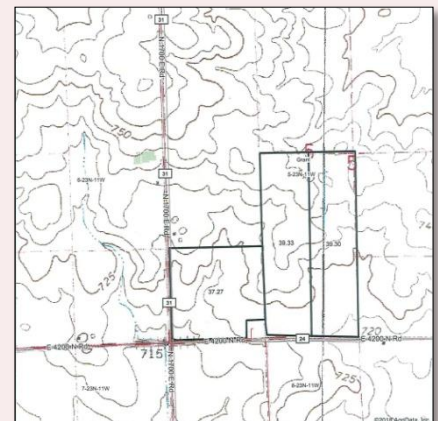
## Grant East 118 Parcel B (May be combined with Grant East 120 Parcel A)

**County:** Vermilion  
**State:** Illinois  
**Twp:** Grant  
**Property type:** Tillable

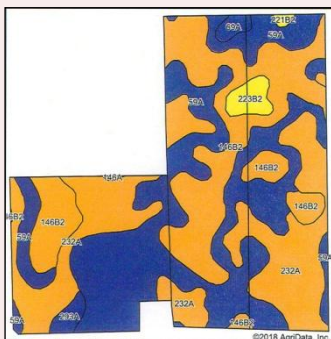
**Directions:** East of Hoopeston on Thompson Ave. 1½ miles east of town on north side of road.

- 118 +/- tillable acres
- Primary soils: Lisbon silt loam, Ashkum silty clay loam, Elliott silty clay loam
- 2016 taxes paid in 2017: \$3,104.16
- System tiled, map available upon request.

**Price - \$8,250 per acre**



Code	Soil Description	Acres	Percent of field	Il. State Productivity Index Legend	Subsoil rooting <sup>a</sup>	Corn Bu/A	Soybeans Bu/A	Wheat Bu/A	Oats Bu/A <sup>b</sup>	Sorghum c Bu/A	Alfalfa d hay, T/A	Grass-legume e hay, T/A	Crop productivity index for optimum management
59A	Lisbon silt loam, 0 to 2 percent slopes	46.66	40.3%	■	FAV	188	59	74	104	0	0.00	5.64	136
232A	Ashkum silty clay loam, 0 to 2 percent slopes	32.61	28.1%	■	FAV	170	56	65	85	0	0.00	5.14	127
**146B2	Elliott silty clay loam, 2 to 4 percent slopes, eroded	31.70	27.4%	■	FAV	**160	**52	**65	**83	0	0.00	**4.77	**119
**223B2	Varna silt loam, 2 to 4 percent slopes, eroded	2.17	1.9%	■	FAV	**150	**48	**61	**75	0	**4.65	0.00	**110
293A	Andres silt loam, 0 to 2 percent slopes	1.31	1.1%	■	FAV	184	59	71	97	0	0.00	5.39	135
69A	Milford silty clay loam, 0 to 2 percent slopes	1.03	0.9%	■	FAV	171	57	68	88	0	0.00	5.52	128
**221B2	Parr silt loam, 2 to 5 percent slopes, eroded	0.32	0.3%	■	FAV	**151	**49	**61	**65	0	**5.12	0.00	**113
146A	Elliott silt loam, 0 to 2 percent slopes	0.10	0.1%	■	FAV	168	55	68	87	0	0.00	5.02	125
<b>Weighted Average</b>						<b>174.2</b>	<b>56</b>	<b>68.6</b>	<b>92</b>	<b>-</b>	<b>0.10</b>	<b>5.14</b>	<b>128.2</b>



**Frank Butler**  
*Illinois & Indiana Managing Broker*  
*Farm Manager*  
**Butler Land Company**  
**515 Poland Road, Danville, IL 61834**  
**217-260-4742**  
**www.butlerlandco.com**