

# Butler Land Company

## Gehrke Farm

**County:** Vermilion  
**State:** Illinois  
**Twp:** Pilot  
**Property type:** Tillable

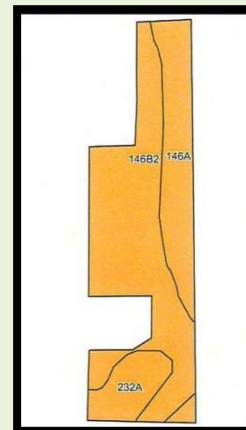
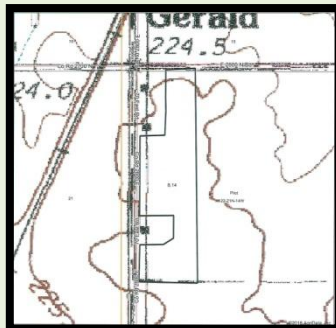
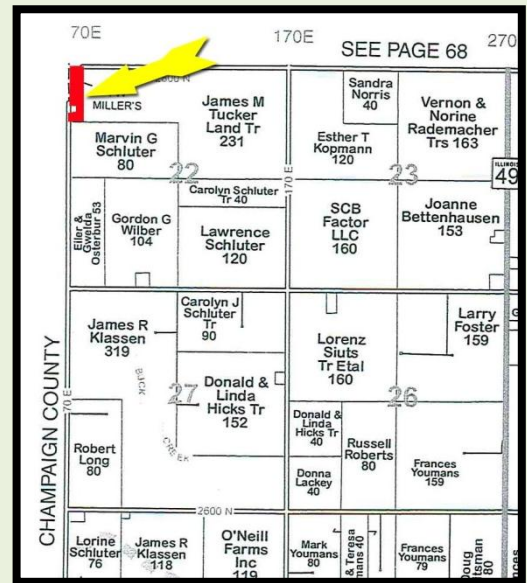


**Directions:** South of Penfield approximately 2 1/2 miles to County Road 2700 N, east one mile OR two miles south of Armstrong on Route 49 then two miles west on road 2800 N.

- 8.14 +/- acres located in Pilot Township on Vermilion/Champaign County, Illinois line.
- Smaller acreage with unlimited potential.
- Possession available for 2018 or seller will lease back.
- Fall fertilizer has been applied (To be reimbursed by buyer unless existing tenant farms in 2018.)
- Soils are Elliott silty clay loam and Ashkum silty clay loam.

**Price Reduced - \$48,000.00**

Code	Soil Description	Acres	Percent of field	Ill. State Productivity Index Legend	Subsoil rooting a	Corn Bu/A	Soybeans Bu/A	Wheat Bu/A	Oats Bu/A b	Sorghum c Bu/A	Alfalfa d hay, T/A	Grass-legume e hay, T/A	Crop productivity index for optimum management
**146B2	Elliott silty clay loam, 2 to 4 percent slopes, eroded	4.89	60.1%		FAV	**160	**52	**65	**83	0	0.00	**4.77	**119
146A	Elliott silt loam, 0 to 2 percent slopes	2.15	26.4%		FAV	168	55	68	87	0	0.00	5.02	125
232A	Ashkum silty clay loam, 0 to 2 percent slopes	1.10	13.5%		FAV	170	56	65	85	0	0.00	5.14	127
<b>Weighted Average</b>						<b>163.5</b>	<b>53.3</b>	<b>65.8</b>	<b>84.3</b>	<b>-</b>	<b>0.00</b>	<b>4.89</b>	<b>121.7</b>



**Frank Butler**  
*Illinois Managing Broker • Indiana Managing Broker*  
*Farm Manager*  
**Butler Land Company, 515 Poland Road, Danville, IL 61834**  
**217-260-4742**  
**www.butlerlandco.com**