

Butler Land Company

Equity 31 LLC

County: Vermilion

State: Illinois

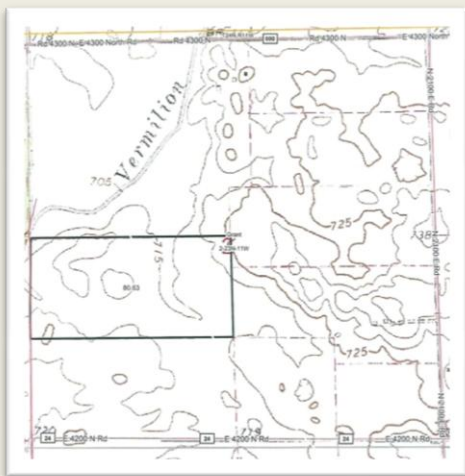
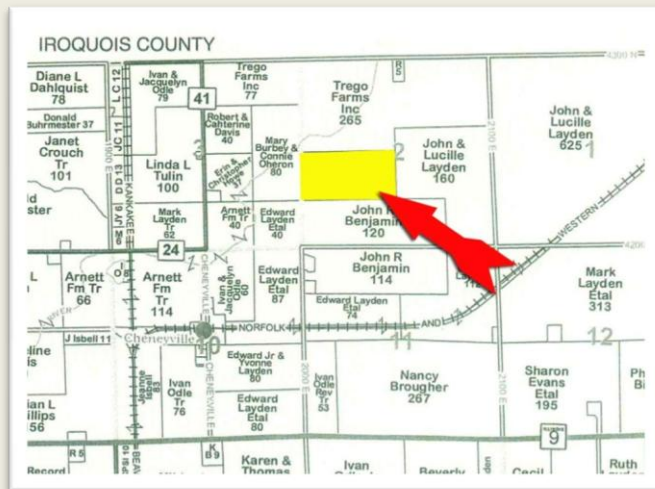
Twp: Grant

Property type: Tillable

Directions: From east side of Hoopston, go east 4 miles to road 2000 E, north 1 ¼ miles.

- 80 +/- acres -- FSA cropland acres 80.63
- Primary soils: Milford silty clay loam and Andres silt loam
- Farm is leased for 2018 on a 50/50 crop share.
- 2016 taxes paid in 2017: \$2068.54

Price - \$8,400 per acre



Area Symbol: IL183, Soil Area Version: 13

Code	Soil Description	Acres	Percent of field	Il. State Productivity Index Legend	Subsoil rooting a	Corn Bu/A	Soybeans Bu/A	Wheat Bu/A	Oats Bu/A b	Sorghum c Bu/A	Alfalfa d hay, T/A	Grass-legume e hay, T/A	Crop productivity index for optimum management
9A	Milford silty clay loam, 0 to 2 percent slopes	37.10	46.0%	[Blue Box]	FAV	171	57	68	88	0	0.00	5.52	121
93A	Andres silt loam, 0 to 2 percent slopes	22.33	27.7%	[Blue Box]	FAV	184	59	71	97	0	0.00	5.39	131
9A	Lisbon silt loam, 0 to 2 percent slopes	12.67	15.7%	[Blue Box]	FAV	188	59	74	104	0	0.00	5.64	131
294B	Symerton silt loam, 2 to 5 percent slopes	6.14	7.6%	[Blue Box]	FAV	**177	**55	**68	**91	0	**6.21	0.00	**131
440B	Jasper loam, 2 to 5 percent slopes	1.24	1.5%	[Blue Box]	FAV	**173	**56	**70	**93	0	**5.71	0.00	**121
221B2	Parr silt loam, 2 to 5 percent slopes, eroded	1.15	1.4%	[Yellow Box]	FAV	**151	**49	**61	**65	0	**5.12	0.00	**111

Frank Butler
 Illinois & Indiana Managing Broker
 Farm Manager
Butler Land Company
 515 Poland Road, Danville, IL 61834
 217-260-4742
www.butlerlandco.com

