

Butler Land Company

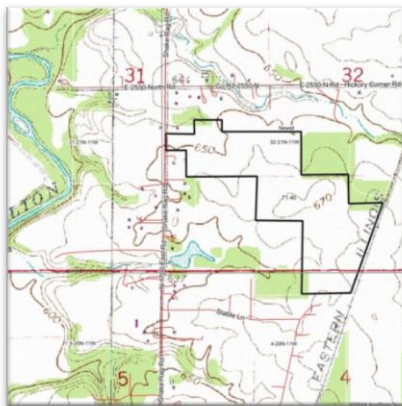
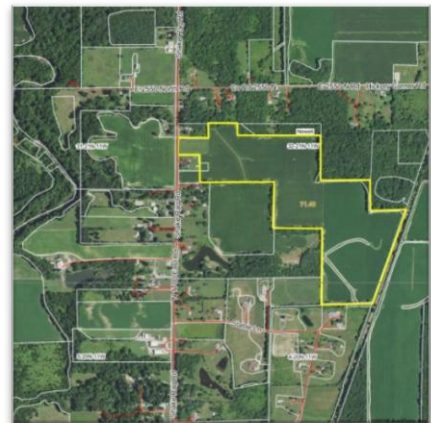
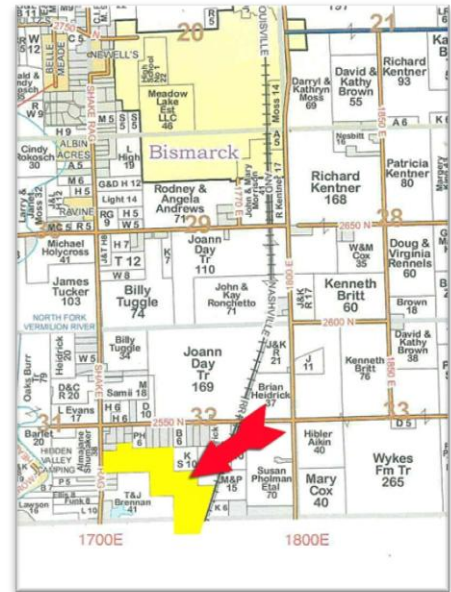
Shake Rag Road

County: Vermilion
State: Illinois
Twp: Newell
Property type: Tillable

Directions: 1.9 miles north of West Newell Road (north from Menard's).
 On east side of Shake Rag Road.

- +/- 74 acres with 68.84 tillable
- Primary soils: Blount silt loam, Ashkum silty clay loam
- Possession is open for 2018
- Yield information available upon request
- Farm is leased for 2018 on a 50/50 crop share
- Located between Danville and Bismarck in Bismarck school district
- Waterways are enrolled in CRP
- Tax information available upon request

Price Reduced - \$5,650 per acre



Frank Butler
 Illinois Managing Broker
 Indiana Principal Broker
 Farm Manager
Butler Land Company
 515 Poland Road, Danville, IL 61834
 217-260-4742
www.butlerlandco.com

Area Symbol: IL 183, Soil Area Version: 13													
Code	Soil Description	Acres	Percent of field	Ill. State Productivity Index Legend	Subsoil rooting #	Corn Bu/A	Soybeans Bu/A	Wheat Bu/A	Oats Bu/A	Sorghum c Bu/A	Alfalfa of hay, T/A	Grass-leg. me e hay, T/A	Crop productivity index for optimum management
23A	Blount silt loam, Lake Michigan Lobe, 0 to 2 percent slopes	43.88	61.5%		FAV	139	47	58	65	0	0.00	4.39	105
**23B2	Blount silt loam, Lake Michigan Lobe, 2 to 4 percent slopes, eroded	22.23	31.1%		FAV	**132	**45	**55	**62	0	0.00	**4.17	**100
232A	Ashkum silty clay loam, 0 to 2 percent slopes	5.29	7.4%		FAV	170	56	65	85	0	0.00	5.14	127
Weighted Average						139.1	47	57.6	65.5	-	0.00	4.38	105.1

