

Butler Land Company

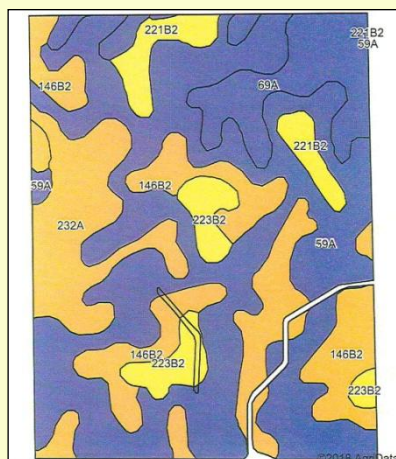
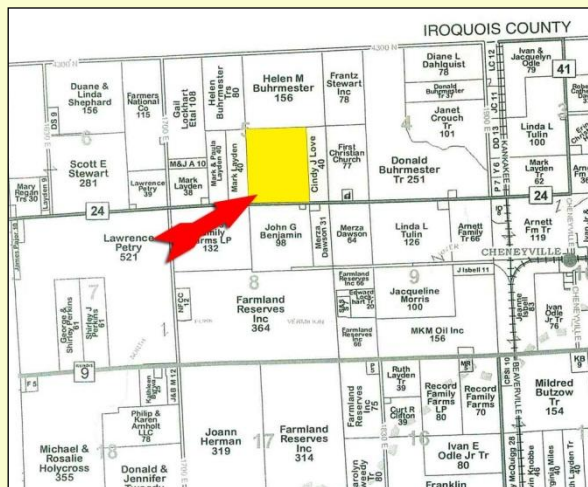
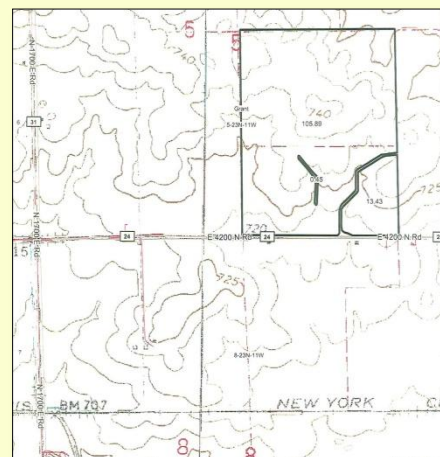
Grant East 120 Parcel A (May be combined with Grant East 120 Parcel B)

County: Vermilion
State: Illinois
Twp: Grant
Property type: Tillable

Directions: East of Hoopeston on Thompson Ave. 1½ miles east of town on north side of road.

- 120 +/- tillable acres - FSA cropland acres 121.18
- Primary soils: Lisbon silt loam, Ashkum silty clay loam
- Farm is leased for 2018 on a 50/50 crop share.
- 2016 taxes paid in 2017: \$3,376.10

Price - \$8,250 per acre



Area Symbol: IL183, Soil Area Version: 13													
Code	Soil Description	Acres	Percent of field	Il. State Productivity Index Legend	Subsoil rooting a	Corn Bu/A	Soybeans Bu/A	Wheat Bu/A	Oats Bu/A	Sorghum c Bu/A	Alfalfa d hay, T/A	Grass-legume e hay, T/A	Crop productivity index for optimum management
59A	Lisbon silt loam, 0 to 2 percent slopes	57.59	48.1%	■	FAV	188	59	74	104	0	0.00	5.64	136
232A	Ashkum silty clay loam, 0 to 2 percent slopes	20.84	17.4%	■	FAV	170	56	65	85	0	0.00	5.14	127
**146B2	Elliott silty clay loam, 2 to 4 percent slopes, eroded	17.80	14.7%	■	FAV	**160	**52	**65	**83	0	0.00	**4.77	**119
69A	Milford silty clay loam, 0 to 2 percent slopes	12.46	10.4%	■	FAV	171	57	68	88	0	0.00	5.52	128
**223B2	Varna silt loam, 2 to 4 percent slopes, eroded	5.90	4.9%	■	FAV	**150	**48	**61	**75	0	**4.65	0.00	**110
**221B2	Parr silt loam, 2 to 5 percent slopes, eroded	5.38	4.5%	■	FAV	**151	**49	**61	**65	0	**5.12	0.00	**113
Weighted Average						175.5	56.3	69.3	92.8	*	0.46	4.88	128.8

Frank Butler
 Illinois & Indiana Managing Broker
 Farm Manager
Butler Land Company
 515 Poland Road, Danville, IL 61834
 217-260-4742
www.butlerlandco.com