

# Butler Land Company

## Gehrke Farm

**County:** Vermilion  
**State:** Illinois  
**Twp:** Pilot  
**Property type:** Tillable

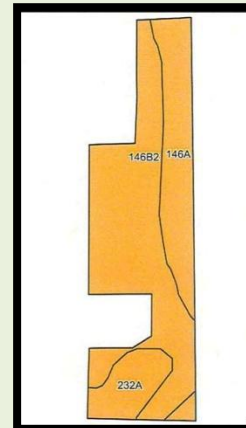
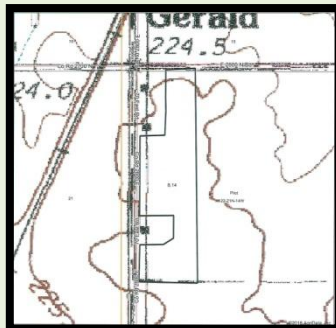
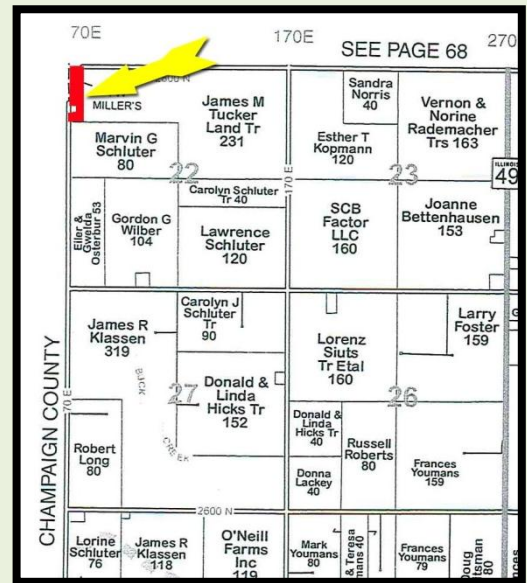


**Directions:** South of Penfield approximately 2 1/2 miles to County Road 2700 N, east one mile OR two miles south of Armstrong on Route 49 then two miles west on road 2800 N.

- 8.14 +/- acres located in Pilot Township on Vermilion/Champaign County, Illinois line.
- Smaller acreage with unlimited potential.
- Possession available for 2018 or seller will lease back.
- Fall fertilizer has been applied (To be reimbursed by buyer unless existing tenant farms in 2018.)
- Soils are Elliott silty clay loam and Ashkum silty clay loam.

**Price Reduced - \$48,000.00**

| Code                    | Soil Description                                       | Acres | Percent of field | Ill. State Productivity Index Legend | Subsoil rooting a | Corn Bu/A    | Soybeans Bu/A | Wheat Bu/A  | Oats Bu/A b | Sorghum c Bu/A | Alfalfa d hay, T/A | Grass-legume e hay, T/A | Crop productivity index for optimum management |
|-------------------------|--|-------|------------------|--------------------------------------|-------------------|--------------|---------------|-------------|-------------|----------------|--------------------|-------------------------|--|
| **146B2                 | Elliott silty clay loam, 2 to 4 percent slopes, eroded | 4.89  | 60.1%            |                                      | FAV               | **160        | **52          | **65        | **83        | 0              | 0.00               | **4.77                  | **119  |
| 146A                    | Elliott silt loam, 0 to 2 percent slopes               | 2.15  | 26.4%            |                                      | FAV               | 168          | 55            | 68          | 87          | 0              | 0.00               | 5.02                    | 125  |
| 232A                    | Ashkum silty clay loam, 0 to 2 percent slopes          | 1.10  | 13.5%            |                                      | FAV               | 170          | 56            | 65          | 85          | 0              | 0.00               | 5.14                    | 127  |
| <b>Weighted Average</b> |  |       |                  |                                      |                   | <b>163.5</b> | <b>53.3</b>   | <b>65.8</b> | <b>84.3</b> | <b>-</b>       | <b>0.00</b>        | <b>4.89</b>             | <b>121.7</b>                                   |



**Frank Butler**  
 Illinois Managing Broker • Indiana Managing Broker  
 Farm Manager  
 Butler Land Company, 515 Poland Road, Danville, IL 61834  
 217-260-4742  
 www.butlerlandco.com