

# Butler Land Company

## Farm 140 LLC

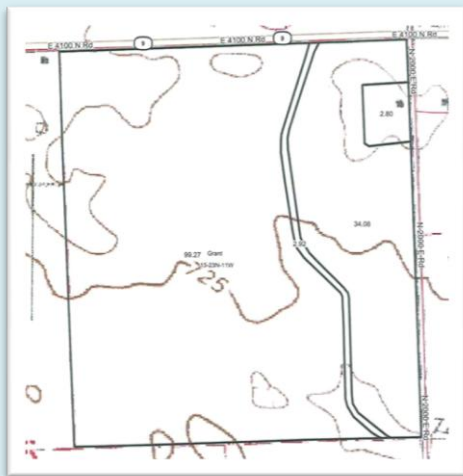
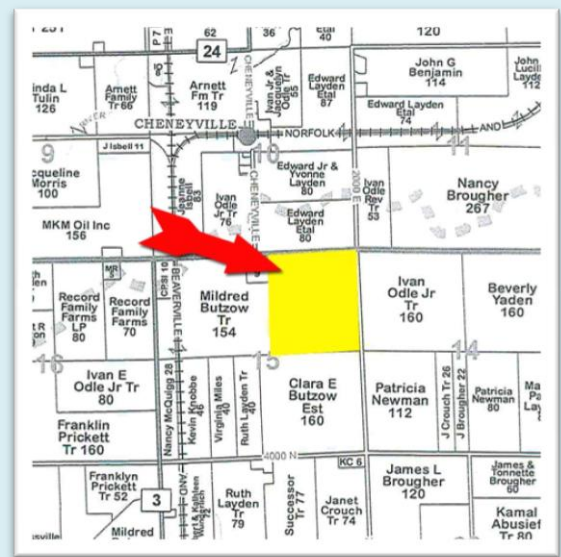
County: Vermilion  
 State: Illinois  
 Twp: Grant  
 Property type: Tillable



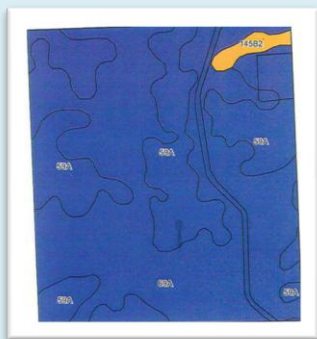
**Directions:** From east edge of Hoopston on Route 9, go east 3 1/2 miles. On south side of road.

- 140 +/- tillable acres
- Primary soils: Milford silty clay loam and Lisbon silt loam
- Farm is leased for 2018 on a 50/50 crop share.
- 2016 taxes paid in 2017: \$5,492.08
- Bins on property do not sell.
- Buildings on property go with the property.

Price - \$8,400 per acre



**Frank Butler**  
 Illinois & Indiana Managing Broker  
 Farm Manager  
**Butler Land Company**  
 515 Poland Road, Danville, IL 61834  
 217-260-4742  
[www.butlerlandco.com](http://www.butlerlandco.com)



Area Symbol: IL183, Soil Area Version: 13

Code	Soil Description	Acres	Percent of field	Ill. State Productivity Index Legend	Subsoil rooting <sup>a</sup>	Corn Bu/A	Soybeans Bu/A	Wheat Bu/A	Oats Bu/A <sup>b</sup>	Sorghum c Bu/A	Alfalfa d T/A	Grass-legume e hay, T/A	Crop productivity index for optimum management
39A	Milford silty clay loam, 0 to 2 percent slopes	85.21	61.3%	■	FAV	171	57	68	88	0	0.00	5.52	126
39A	Lisbon silt loam, 0 to 2 percent slopes	51.49	37.0%	■	FAV	188	59	74	104	0	0.00	5.64	136
**145B2	Saybrook silt loam, 2 to 5 percent slopes, eroded	2.37	1.7%	■	FAV	**170	**54	**66	**90	0	**5.96	0.00	**126
<b>Weighted Average</b>						177.3	57.7	70.2	94	0	0.10	5.47	130.6